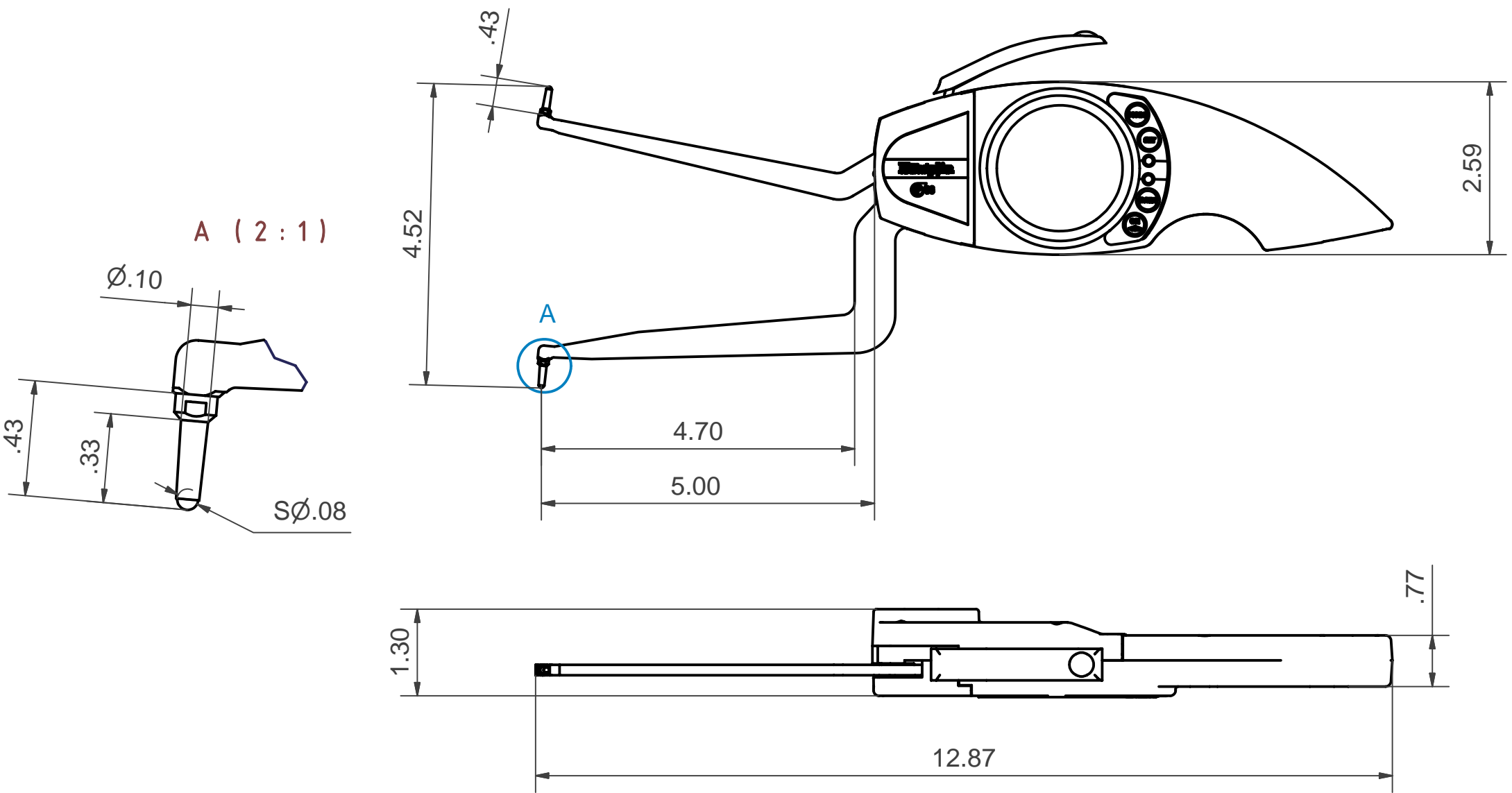


DATA SHEET: F475

Kroeplin GmbH
 Gartenstraße 50
 36381 Schlüchtern

Telefon (06661)86 0
 Telefax (06661)86 39
 sales@kroeplin.com
 www.kroeplin.com

Kroeplin
 Längenmesstechnik



SUBJECT TO TECHNICAL ALTERATIONS

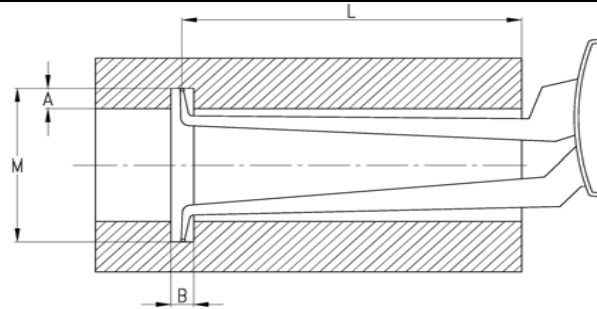
SCALE: 1:2

TYPE: F
 RANGE: 2.95 - 4.52 INCH
 DIGITAL STEP: .001 INCH

PRICECLASS: 22
 RANGE OF INDICATION: 2.92 - 4.57 INCH
 MEASURING FORCE: 1.3 - 1.8 N
 WEIGHT: 380 g

ACCEPTABLE DEVIATIONS (VDI/VDE/DGQ 2618 Bl. 12.1/13.1)
 MAX. PERMISSIBLE ERRORS: G = .002 INCH
 REPEATABILITY: r = .001 INCH

REFERENCE TEMPERATURE: 20°C
 OPERATION TEMPERATURE: 10°C - 30°C
 STORAGE TEMPERATURE: -10°C - 50°C



Measuring Range M [inch]

Groove Depth A

	2.95	2.99	3.03	3.07	3.11	3.15	3.19	3.23	3.27	3.43	3.58	3.74	3.90	3.06	4.21	4.37	4.53
0	0/4.51	0/4.55	0/4.59	0/4.63	0/4.67	0/4.69	0/4.72	0/4.76	0/4.80	0/4.96	0/4.96	0/4.96	0/4.98	0/5.00	0/5.22	0/5.53	0/5.89
.02		.07/4.53	.07/4.57	.07/4.61	.07/4.65	.07/4.69	.07/4.70	.07/4.74	.07/4.78	.07/4.94	.07/4.96	.07/4.96	.07/4.98	.07/4.98	.07/5.16	.07/5.47	.07/5.81
.04			.09/4.55	.09/4.59	.09/4.63	.09/4.65	.09/4.70	.09/4.72	.09/4.76	.09/4.92	.09/4.96	.09/4.96	.09/4.98	.09/4.98	.09/5.12	.09/5.41	.09/5.75
.06				.09/4.57	.09/4.61	.09/4.65	.09/4.70	.09/4.70	.09/4.74	.09/4.88	.09/4.96	.09/4.96	.09/4.96	.09/4.98	.10/5.06	.09/5.35	.10/5.69
.08					.09/4.59	.09/4.61	.09/4.65	.09/4.69	.09/4.72	.10/4.86	.10/4.96	.10/4.96	.10/4.96	.10/4.98	.10/5.02	.10/5.31	.10/5.63
.10						.10/4.61	.10/4.63	.10/4.67	.10/4.70	.10/4.84	.10/4.96	.10/4.96	.10/4.96	.10/4.96	.11/5.02	.11/5.26	.11/5.57
.12							.10/4.61	.10/4.65	.10/4.69	.10/4.82	.10/4.96	.11/4.96	.11/4.96	.11/4.96	.11/5.02	.11/5.20	.11/5.51
.14								.10/4.63	.10/4.67	.11/4.80	.11/4.96	.11/4.96	.11/4.96	.11/4.96	.11/4.96	.11/5.16	.12/5.45
.16									.11/4.65	.11/4.78	.11/4.92	.11/4.96	.11/4.96	.11/4.96	.12/4.96	.12/5.12	.12/5.39
.18										.11/4.76	.11/4.90	.11/4.96	.12/4.96	.12/4.96	.12/4.96	.13/5.06	.13/5.35
.20										.11/4.74	.12/4.88	.12/4.94	.12/4.96	.12/4.96	.13/4.96	.13/5.02	.13/5.30
.22										.11/4.72	.12/4.86	.12/4.94	.13/4.94	.13/4.96	.13/4.96	.14/4.96	.14/5.24
.24										.12/4.69	.13/4.84	.13/4.94	.13/4.94	.13/4.94	.14/4.96	.14/4.96	.14/5.20
.26											.13/4.82	.13/4.94	.13/4.94	.14/4.94	.14/4.94	.15/4.94	.15/5.14
.28											.13/4.80	.13/4.94	.14/4.94	.14/4.94	.15/4.94	.15/4.94	.15/5.10
.30											.13/4.76	.14/4.92	.14/4.94	.15/4.94	.15/4.94	.15/4.94	.16/5.04
.31											.14/4.74	.14/4.88	.15/4.94	.15/4.94	.15/4.94	.16/4.94	.16/5.00
		B/L															

B = min. groove width [inch]
L = max. useable arm length [inch]